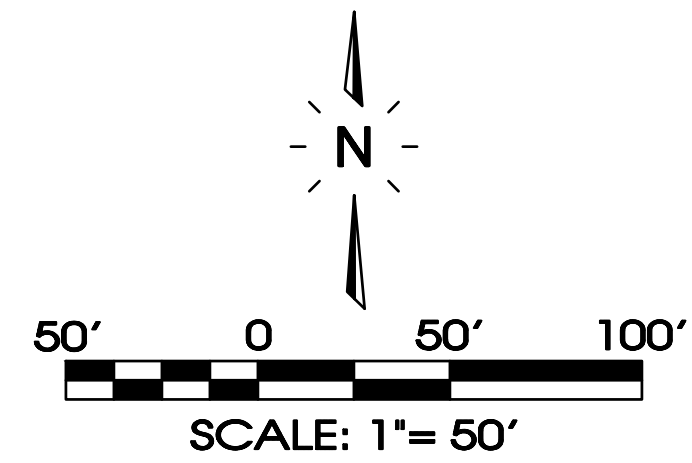


Limits Of Disturbance =49.91± Ac.

MAP 46, PARCEL 16.01
EDANA CANNON
BOOK 6839, PG. 170
ZONED: AR-15A

MAP 46, PARCEL 76.00
CITY OF FAIRVIEW
BOOK 768, PG. 502



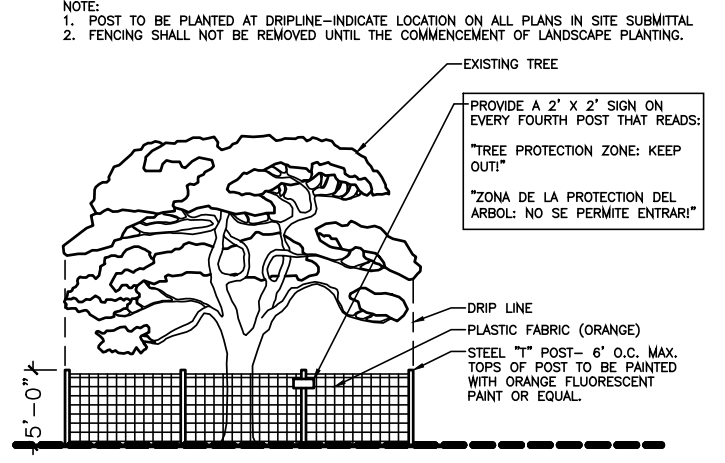
Legend:								
□	EXIST. CONCRETE MONUMENT	○	POST INDICATOR VALVE	Ⓐ	DRAINAGE PIPE DESIGNATION	— PH —	EXISTING PHONE	— PH —
●	IRON PIN SET (I.P.S.)	⚡	BLOW OFF VALVE	Ⓜ	RIP RAP	— OH —	EXISTING ELECTRIC	— OH —
○	IRON PIN FOUND (I.P.F.)	V.A.	REDUCER	➔	RUNOFF FLOW ARROW	— 601 —	PROPERTY LINE	— 601 —
+	EXIST. SIGN POST	HC SIGN	REMOTE FIRE DEPT. CONNECTION	Ⓜ	INLET FILTER PROTECTION	— SS —	EASEMENTS	— SS —
○	EXIST. SEWER CLEANOUT	PROPOSED SIGN POST	CONCRETE THRUST BLOCK	63.25 x	PROPOSED SPOT ELEVATION	— ROW —	RIGHT OF WAY	— ROW —
○	EXIST. MANHOLE (SEWER & PHONE)	CONCRETE BOLLARD	DOUBLE DETECTOR CHECK VALVE	(63.25) x	EXIST. SPOT ELEVATION	— SF — SF — SF	EROSION CONTROL SILT FENCE	— SF — SF — SF
⊗	EXIST. CATCH BASIN (STORM SEWER)	WHEEL STOP	FIRE DEPT. CONNECTION	>	SEWER/STORM FLOW DIRECTION	— E — E — E	EROSION EEL	— E — E — E
⊗	EXIST. WATER/GAS VALVE	CONCRETE SIDEWALK	FIRE HYDRANT	■	CATCH BASIN	— W — W — W	EXISTING WATER	— W — W — W
Ⓜ	EXIST. TELEPHONE RISER	EXTRUDED CURB	GATE VALVE & BOX	Ⓜ	CURB INLET	— W — W — W	PROPOSED WATER	— W — W — W
Ⓜ	EXIST. GAS RISER	CURB & GUTTER	WATER METER	Ⓜ	AREA DRAIN	— X — X — X — X	EXISTING FENCELINE	— X — X — X — X
Ⓜ	ELECTRICAL ENCLOSURE	TRAFFIC ARROW	GAS METER	Ⓜ	HEADWALL	— — — — —	PHASE BOUNDARY	— — — — —
Ⓜ	EXIST. WATER METER	TURN LANE ARROWS	GREASE TRAP	Ⓜ	WINGED HEADWALL	— GAS —	EXISTING GAS LINE	— GAS —
Ⓜ	EXIST. UTILITY POLE	REVISION NUMBER	EXTERIOR CLEANOUT ECO	Ⓜ	CONCRETE SWALE	— GAS —	PROPOSED GAS LINE	— GAS —
Ⓜ	EXIST. FIRE HYDRANT	#1 DRAINAGE STRUCTURE DESIGNATION	MANHOLE	Ⓜ	TYPE- X- HEADWALL	— STM — STM	EXISTING STORM	— STM — STM

* Critical Lot
★ Outfall

Notes:
1) All cut and fill work shown on lots must be completed prior to issuance of any building permits.
2) The Lots must be stabilized or EPSC protected along with public infrastructure prior to final plat being signed.

FINAL OUTFALLS

NUMBER	DESCRIPTION	DISTURBED AREA	UNDISTURBED AREA	TOTAL AREA	% SLOPES
1	DETENTION POND 1/SEDIMENT BASIN 1	10.70	0.00	10.70	1-15
2	DETENTION POND 2/SEDIMENT BASIN 2	16.00	0.00	16.00	1-15
3	DETENTION POND 3/SEDIMENT BASIN 3	26.30	0.00	26.30	1-15
4	SOUTHWEST CORNER OF THE SITE	0.00	4.00	4.00	1-15
5	EXISTING STREAM	0.00	6.30	6.30	1-15



TREE PRESERVATION NOTES:
• AFTER INSTALLATION OF TREE PROTECTION FENCING, CONTRACTOR SHALL CONTACT KANE ADAMS WITH MURFREESBORO URBAN ENVIRONMENTAL DEPT. AT 615-895-8059 FOR A TREE PROTECTION INSPECTION.
• ANY PRESERVED TREES DAMAGED OR REMOVED DURING CONSTRUCTION MAY HAVE TO BE REPLANTED PRIOR TO CERTIFICATE OF OCCUPANCY TO FULFILL PERIMETER PLANTING OR BUFFER REQUIREMENTS.
• TREE PROTECTION FENCING THAT DOES NOT GO TO OR EXCEED THE PRESERVED TREE'S DRIFLINE WILL NOT BE ACCEPTED.

SEE C5.0 FOR PIPE & STRUCTURE TABLES

SEC, Inc.
SITE ENGINEERING CONSULTANTS
ENGINEERING • SURVEYING • LAND PLANNING
LANDSCAPE ARCHITECTURE
850 MIDDLE TENNESSEE BOULEVARD
MURFREESBORO, TENNESSEE 37129
PHONE: (615) 890-7901 E-MAIL: MTAYLOR@SEC-CIVIL.COM FAX: (615) 895-2567
NO PORTION OF THIS DRAWING MAY BE REPRODUCED WITHOUT THE EXPRESSED WRITTEN CONSENT OF S.E.C. INC.
COPYRIGHT S.E.C. INC., 2021

REVIEW SET
Not intended for construction

Aden Woods Section 3
Fairview, Tennessee

Grading And Drainage & Final EPSC/SWPP Plan

REVISED: 08-05-2021; Staff Comments #1
08-31-2021; Staff Comments #2
09-28-2021; Staff Comments #3

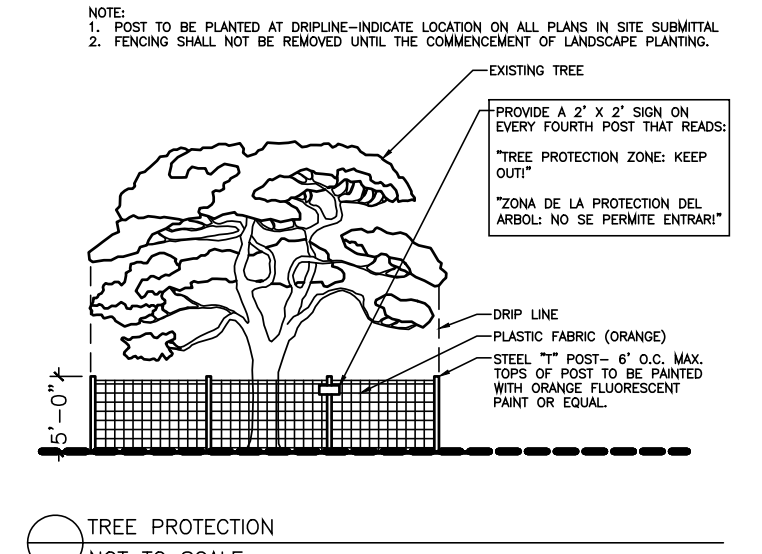
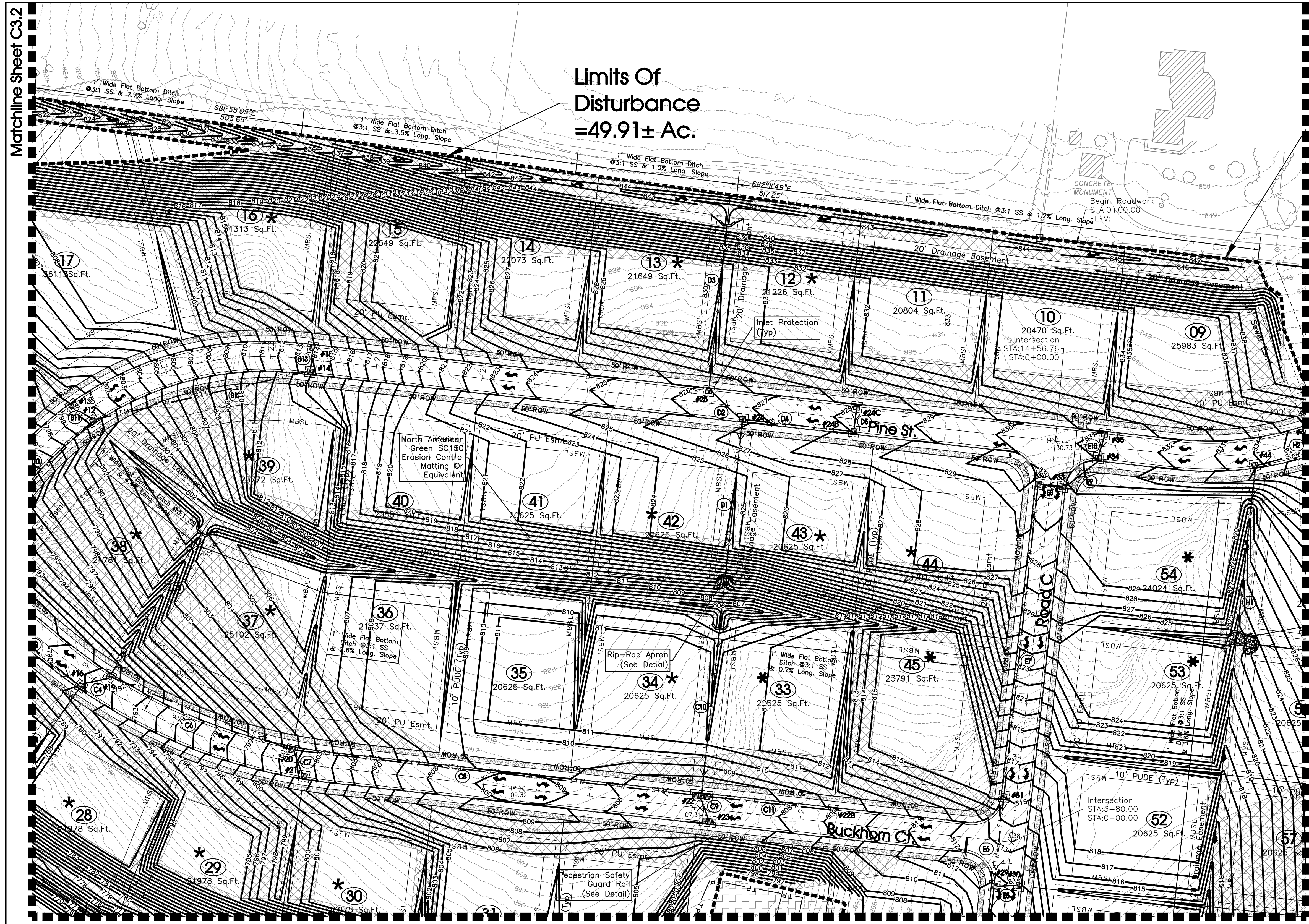
DRAWN: CFB3, SJA
DATE: 5-7-2021
CHECKED: MAT
FILE NAME: 2005BAdenWoods3
SCALE: 1" = 50'
JOB NO. 20058
SHEET:

C3.0

Matchline Sheet C3.2

Matchline Sheet C3.0

Limits Of Disturbance =49.91± Ac.



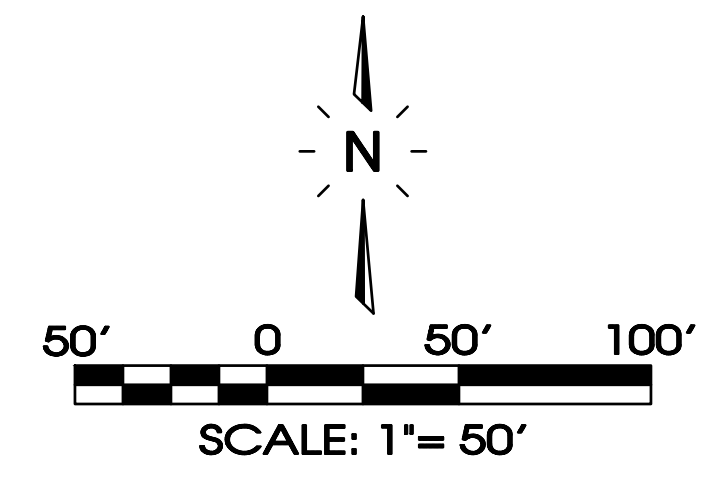
TREE PRESERVATION NOTES: AFTER INSTALLATION OF TREE PROTECTION FENCING, CONTRACTOR SHALL CONTACT KANE ADAMS WITH MURFREESBORO URBAN ENVIRONMENTAL DEPT. AT 615-895-8059 FOR A TREE PROTECTION INSPECTION.

Legend table with columns for symbols and descriptions for items like EXIST. CONCRETE MONUMENT, BENCHMARK, POST INDICATOR VALVE, etc.

* Critical Lot
1 Outfall

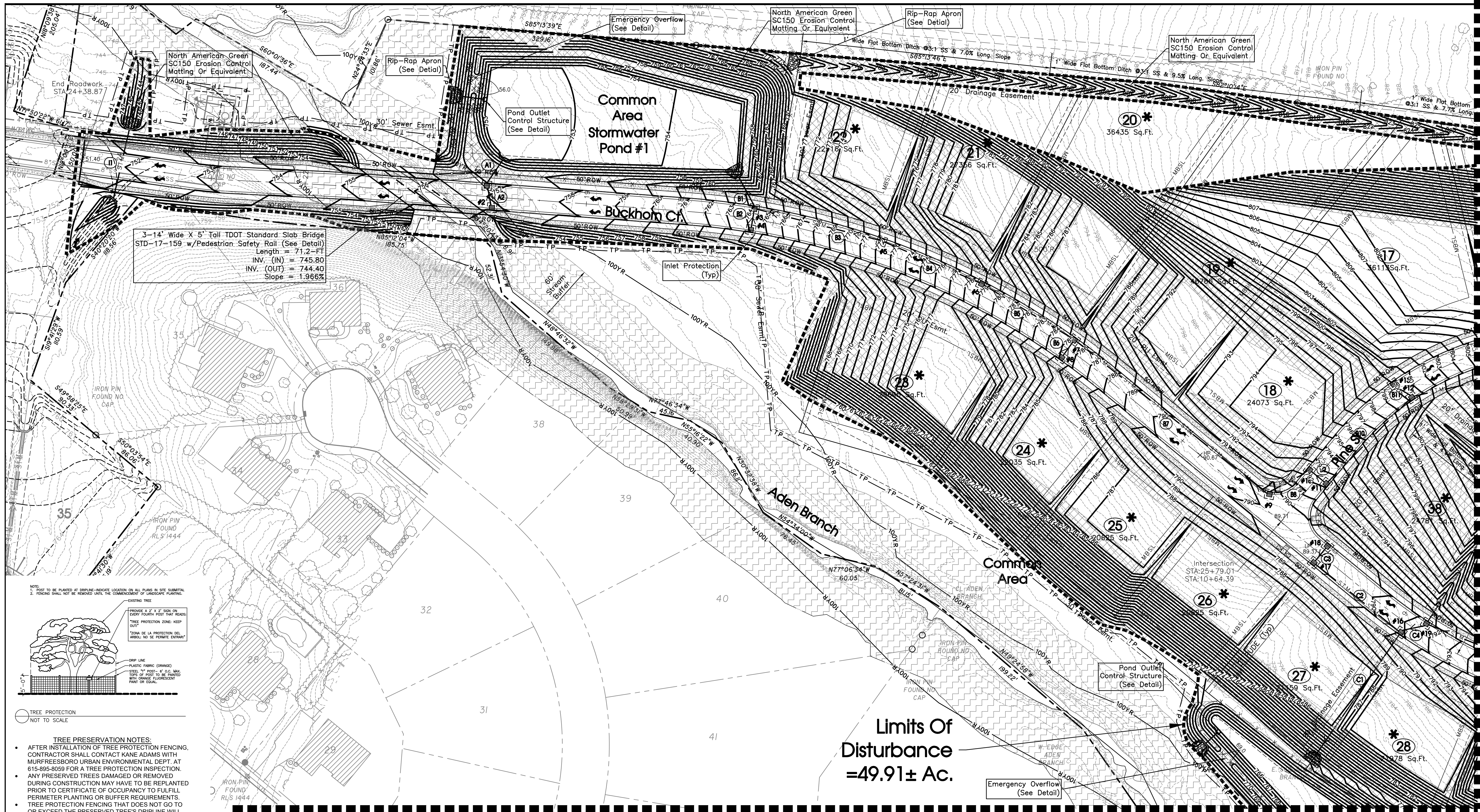
FINAL OUTFALLS table with columns: NUMBER, DESCRIPTION, DISTURBED AREA, UNDISTURBED AREA, TOTAL AREA, % SLOPES

Notes: 1) All cut and fill work shown on lots must be completed prior to issuance of any building permits. 2) The Lots must be stabilized or EPSC protected along with public infrastructure prior to final plat being signed.

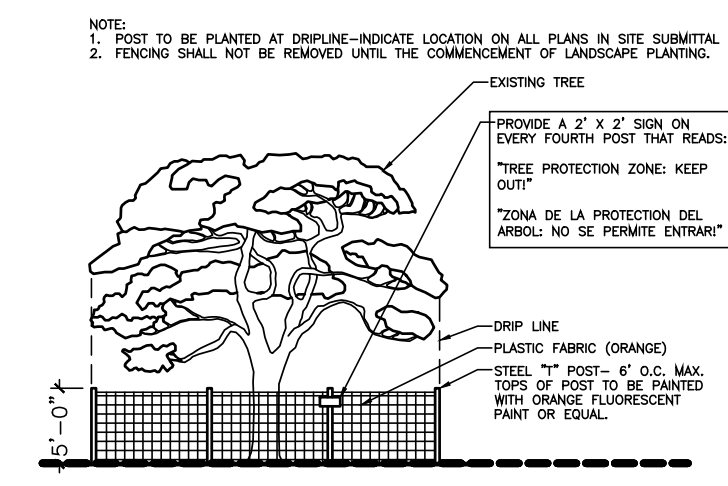


SEE C5.0 FOR PIPE & STRUCTURE TABLES

Vertical sidebar containing: SITE ENGINEERING CONSULTANTS SEC, Inc., Aden Woods Section 3 Fairview, Tennessee, Grading And Drainage & Final EPSC/SWPP Plan, and project details like DATE: 5-7-2021, SCALE: 1"=50', SHEET: 20058.



3-14' Wide X 5' Tall TDOT Standard Slab Bridge
 STD-17-159 w/Pedestrian Safety Rail (See Detail)
 Length = 71.2-FT
 INV. (IN) = 745.80
 INV. (OUT) = 744.40
 Slope = 1.966%



TREE PRESERVATION NOTES:

- AFTER INSTALLATION OF TREE PROTECTION FENCING, CONTRACTOR SHALL CONTACT KANE ADAMS WITH MURFREESBORO URBAN ENVIRONMENTAL DEPT. AT 615-895-8059 FOR A TREE PROTECTION INSPECTION.
- ANY PRESERVED TREES DAMAGED OR REMOVED DURING CONSTRUCTION MAY HAVE TO BE REPLANTED PRIOR TO CERTIFICATE OF OCCUPANCY TO FULFILL PERIMETER PLANTING OR BUFFER REQUIREMENTS.
- TREE PROTECTION FENCING THAT DOES NOT GO TO OR EXCEED THE PRESERVED TREE'S DRIFLINE WILL NOT BE ACCEPTED.

Legend:												
□	EXIST. CONCRETE MONUMENT	⊕	BENCHMARK	○	POST INDICATOR VALVE	Ⓜ	DRAINAGE PIPE DESIGNATION	— PH —	EXIST. PHONE	— PH —	— STM —	PROPOSED STORM
●	IRON PIN SET (I.P.S.)	♿	HANDICAP PARKING SYMBOL	⊠	BLOW OFF VALVE	Ⓜ	RIP RAP	— OH —	EXISTING ELECTRIC	— OH —	— 601 —	EXISTING CONTOUR LINES
○	IRON PIN FOUND (I.P.F.)	V.A.	VAN ACCESSIBLE HANDICAP DESIGNATION	▽	REDUCER	➔	RUNOFF FLOW ARROW	— — —	PROPERTY LINE	— — —	— 601 —	PROPOSED CONTOUR LINES
+	EXIST. SIGN POST	⊕	HC SIGN	⊠	REMOTE FIRE DEPT. CONNECTION	Ⓜ	INLET FILTER PROTECTION	— — —	EASEMENTS	— — —	— SS —	EXISTING SANITARY SEWER
○	EXIST. SEWER CLEANOUT	+	PROPOSED SIGN POST	⊠	CONCRETE THRUST BLOCK	63.25 x 63.25	PROPOSED SPOT ELEVATION	— ROW —	RIGHT OF WAY	— SS —	— SS —	PROPOSED SANITARY SEWER
○	EXIST. MANHOLE (SEWER & PHONE)	●	CONCRETE BOLLARD	⊠	DOUBLE DETECTOR CHECK VALVE	(63.25 x 63.25)	EXIST. SPOT ELEVATION	— SF —	EROSION CONTROL SILT FENCE	— W —	— W —	EXISTING WATER
⊠	EXIST. CATCH BASIN (STORM SEWER)	⊠	WHEEL STOP	⊠	FIRE DEPT. CONNECTION	⊠	SEWER/STORM FLOW DIRECTION	— E —	EROSION EEL	— E —	— W —	PROPOSED WATER
⊠	EXIST. WATER/GAS VALVE	⊠	CONCRETE SIDEWALK	⊠	FIRE HYDRANT	⊠	CATCH BASIN	— X —	EXISTING TREELINE	— X —	— X —	EXISTING FENCELINE
⊠	EXIST. TELEPHONE RISER	⊠	EXTRUDED CURB	⊠	GATE VALVE & BOX	⊠	CURB INLET	— — —	EXISTING FENCELINE	— — —	— — —	MINIMUM BUILDING SETBACK LINE
⊠	EXIST. GAS RISER	⊠	CURB & GUTTER	⊠	WATER METER	⊠	AREA DRAIN	— — —	PHASE BOUNDARY	— — —	— — —	EXISTING GAS LINE
⊠	ELECTRICAL ENCLOSURE	➔	TRAFFIC ARROW	⊠	GAS METER	⊠	HEADWALL	— — —	EXISTING GAS LINE	— GAS —	— — —	PROPOSED GAS LINE
⊠	EXIST. WATER METER	➔	TURN LANE ARROWS	⊠	GREASE TRAP	⊠	WINGED HEADWALL	— — —	EXISTING GAS LINE	— GAS —	— — —	EXISTING STORM
⊠	EXIST. UTILITY POLE	➔	REVISION NUMBER	⊠	EXTERIOR CLEANOUT ECO	⊠	CONCRETE SWALE	— — —	PROPOSED GAS LINE	— GAS —	— — —	EXISTING STORM
⊠	EXIST. FIRE HYDRANT	#1	DRAINAGE STRUCTURE DESIGNATION	⊠	MANHOLE	⊠	TYPE-X HEADWALL	— — —	EXISTING STORM	— STM —	— STM —	EXISTING STORM

Contour Legend

--- 601 ---	Section 2 Contour
— 601 —	Proposed Contour
- - - 601 - - -	Existing Contour

* Critical Lot
 1 ☆ Outfall

FINAL OUTFALLS

NUMBER	DESCRIPTION	DISTURBED AREA	UNDISTURBED AREA	TOTAL AREA	% SLOPES
1	DETENTION POND 1/SEDIMENT BASIN 1	10.70	0.00	10.70	1-15
2	DETENTION POND 2/SEDIMENT BASIN 2	16.00	0.00	16.00	1-15
3	DETENTION POND 3/SEDIMENT BASIN 3	26.30	0.00	26.30	1-15
4	SOUTHWEST CORNER OF THE SITE	0.00	4.00	4.00	1-15
5	EXISTING STREAM	0.00	6.30	6.30	1-15

Matchline Sheet C3.3

Notes:

- All cut and fill work shown on lots must be completed prior to issuance of any building permits.
- The Lots must be stabilized or EPSC protected along with public infrastructure prior to final plat being signed.

50' 0 50' 100'
 SCALE: 1" = 50'

SEE C5.0 FOR PIPE & STRUCTURE TABLES

Matchline Sheet C3.1

SEC, Inc.
 SITE ENGINEERING CONSULTANTS
 ENGINEERING • SURVEYING • LAND PLANNING
 LANDSCAPE ARCHITECTURE
 850 MIDDLE TENNESSEE BOULEVARD
 MURFREESBORO, TENNESSEE 37129
 PHONE: (615) 890-7901 E-MAIL: MTAYLOR@SEC-CIVIL.COM FAX: (615) 895-2567
 NO PORTION OF THIS DRAWING MAY BE REPRODUCED WITHOUT THE EXPRESSED WRITTEN CONSENT OF S.E.C. INC.
 COPYRIGHT © S.E.C. INC., 2021

REVIEW SET
 (Not Intended for Construction)

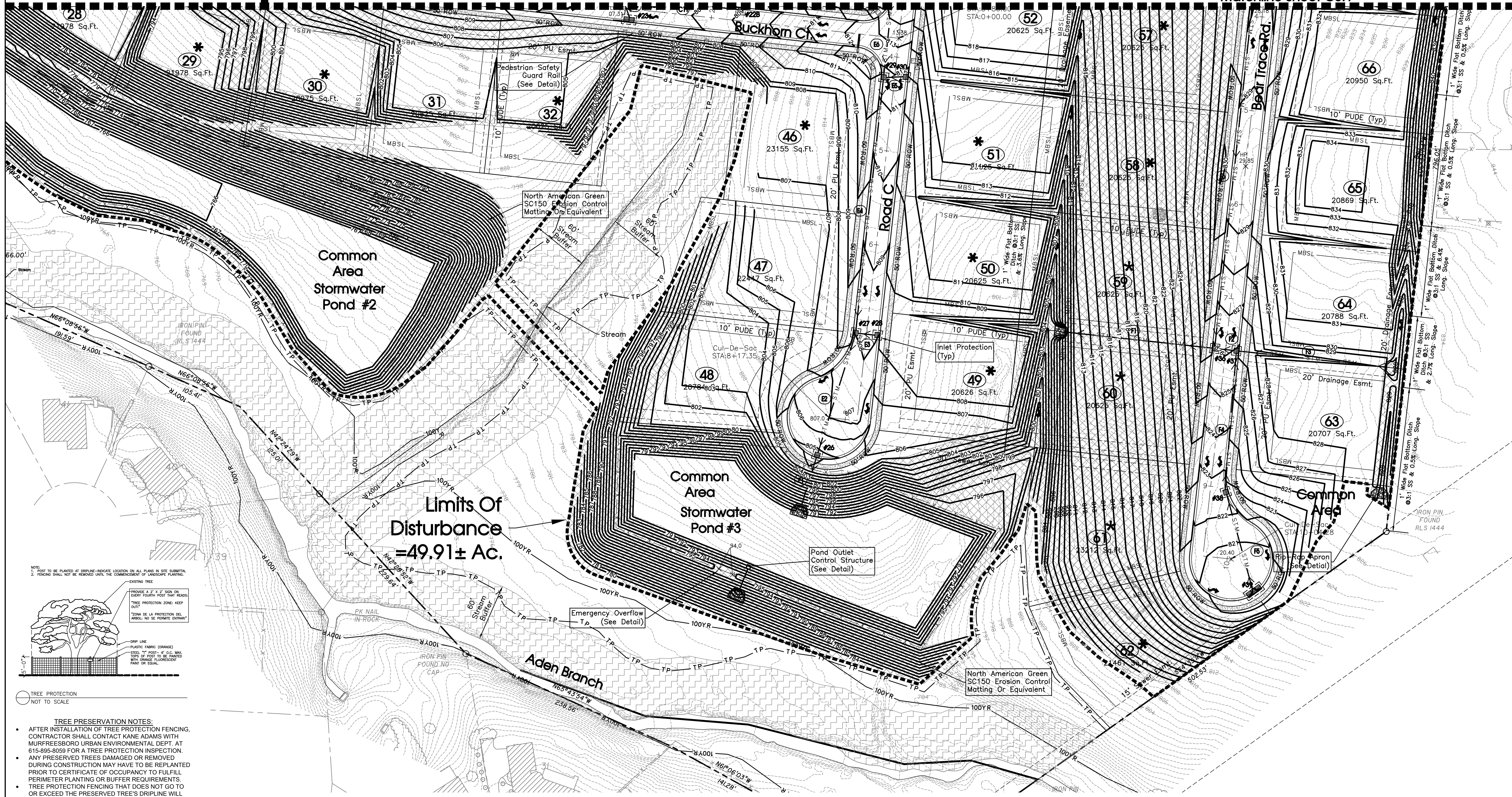
Aden Woods Section 3
 Fairview, Tennessee

Grading And Drainage & Final EPSC/SWPP Plan

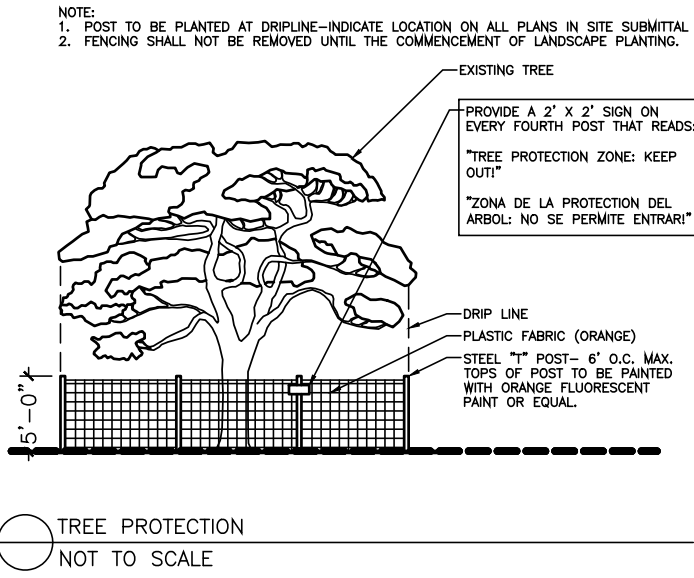
REVISED: 08-06-2021: Staff Comments #1
 08-31-2021: Staff Comments #2
 09-28-2021: Staff Comments #3

DRAWN: CFB3, SJA
 DATE: 5-7-2021
 CHECKED: MAT
 FILE NAME: 20058AdenWoods3
 SCALE: 1" = 50'
 JOB NO. 20058
 SHEET:

C3.2



Limits Of Disturbance = 49.91 ± Ac.



TREE PRESERVATION NOTES:

- AFTER INSTALLATION OF TREE PROTECTION FENCING, CONTRACTOR SHALL CONTACT KANE ADAMS WITH MURFREESBORO URBAN ENVIRONMENTAL DEPT. AT 615-895-9059 FOR A TREE PROTECTION INSPECTION.
- ANY PRESERVED TREES DAMAGED OR REMOVED DURING CONSTRUCTION MAY HAVE TO BE REPLANTED PRIOR TO CERTIFICATE OF OCCUPANCY TO FULFILL PERIMETER PLANTING OR BUFFER REQUIREMENTS.
- TREE PROTECTION FENCING THAT DOES NOT GO TO OR EXCEED THE PRESERVED TREE'S DRIPLINE WILL NOT BE ACCEPTED.

Legend:			
[Symbol]	EXIST. CONCRETE MONUMENT	[Symbol]	BENCHMARK
[Symbol]	IRON PIN SET (I.P.S.)	[Symbol]	HANDICAP PARKING SYMBOL
[Symbol]	IRON PIN FOUND (I.P.F.)	[Symbol]	V.A. VAN ACCESSIBLE HANDICAP DESIGNATION
[Symbol]	EXIST. SIGN POST	[Symbol]	HC SIGN
[Symbol]	EXIST. SEWER CLEANOUT	[Symbol]	PROPOSED SIGN POST
[Symbol]	EXIST. MANHOLE (SEWER & PHONE)	[Symbol]	CONCRETE BOLLARD
[Symbol]	EXIST. CATCH BASIN (STORM SEWER)	[Symbol]	WHEEL STOP
[Symbol]	EXIST. WATER/GAS VALVE	[Symbol]	CONCRETE SIDEWALK
[Symbol]	EXIST. TELEPHONE RISER	[Symbol]	EXTRUDED CURB
[Symbol]	EXIST. GAS RISER	[Symbol]	CURB & GUTTER
[Symbol]	ELECTRICAL ENCLOSURE	[Symbol]	TRAFFIC ARROW
[Symbol]	EXIST. WATER METER	[Symbol]	TURN LANE ARROWS
[Symbol]	EXIST. UTILITY POLE	[Symbol]	REVISION NUMBER
[Symbol]	EXIST. FIRE HYDRANT	[Symbol]	DRAINAGE STRUCTURE DESIGNATION
[Symbol]	POST INDICATOR VALVE	[Symbol]	REDUCER
[Symbol]	BLOW OFF VALVE	[Symbol]	REMOTE FIRE DEPT. CONNECTION
[Symbol]	CONCRETE THRUST BLOCK	[Symbol]	DOUBLE DETECTOR CHECK VALVE
[Symbol]	FIRE DEPT. CONNECTION	[Symbol]	FIRE HYDRANT
[Symbol]	GATE VALVE & BOX	[Symbol]	WATER METER
[Symbol]	WATER METER	[Symbol]	GAS METER
[Symbol]	GAS METER	[Symbol]	GREASE TRAP
[Symbol]	EXTERIOR CLEANOUT ECO	[Symbol]	MANHOLE
[Symbol]	MANHOLE	[Symbol]	TYPE- X- HEADWALL
[Symbol]	DRAINAGE PIPE DESIGNATION	[Symbol]	RIP RAP
[Symbol]	EXISTING PHONE	[Symbol]	INLET FILTER PROTECTION
[Symbol]	PH	[Symbol]	PROPOSED SPOT ELEVATION
[Symbol]	OH	[Symbol]	EXIST. SPOT ELEVATION
[Symbol]	PROPERTY LINE	[Symbol]	SEWER/STORM FLOW DIRECTION
[Symbol]	EASEMENTS	[Symbol]	CATCH BASIN
[Symbol]	RIGHT OF WAY	[Symbol]	CURB INLET
[Symbol]	ROW	[Symbol]	AREA DRAIN
[Symbol]	EROSION CONTROL SILT FENCE	[Symbol]	HEADWALL
[Symbol]	EXISTING EEL	[Symbol]	MINIMUM BUILDING SETBACK LINE
[Symbol]	EXISTING TREELINE	[Symbol]	PHASE BOUNDARY
[Symbol]	EXISTING FENCELINE	[Symbol]	WINGED HEADWALL
[Symbol]	EXISTING GAS LINE	[Symbol]	EXISTING GAS LINE
[Symbol]	EXISTING STORM	[Symbol]	PROPOSED GAS LINE
[Symbol]	EXISTING STORM	[Symbol]	EXISTING STORM

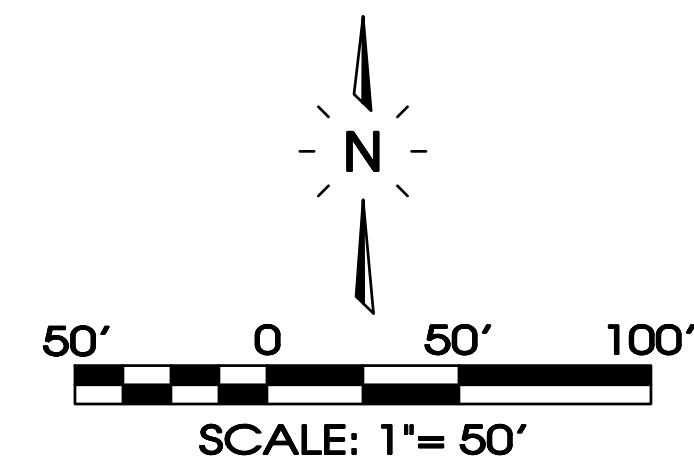
* Critical Lot
1 ☆ Outfall

FINAL OUTFALLS

NUMBER	DESCRIPTION	DISTURBED AREA	UNDISTURBED AREA	TOTAL AREA	% SLOPES
1	DETENTION POND 1/SEDIMENT BASIN 1	10.70	0.00	10.70	1-15
2	DETENTION POND 2/SEDIMENT BASIN 2	16.00	0.00	16.00	1-15
3	DETENTION POND 3/SEDIMENT BASIN 3	26.30	0.00	26.30	1-15
4	SOUTHWEST CORNER OF THE SITE	0.00	4.00	4.00	1-15
5	EXISTING STREAM	0.00	6.30	6.30	1-15

Notes:

- All cut and fill work shown on lots must be completed prior to issuance of any building permits.
- The Lots must be stabilized or EPSC protected along with public infrastructure prior to final plat being signed.



SEE C5.0 FOR PIPE & STRUCTURE TABLES

SEC, Inc.
 ENGINEERING • SURVEYING • LAND PLANNING
 LANDSCAPE ARCHITECTURE
 850 MIDDLE TENNESSEE BOULEVARD
 MURFREESBORO, TENNESSEE 37129
 PHONE: (615) 890-7901 E-MAIL: M.TAYLOR@SEC-CIVIL.COM FAX: (615) 895-2567
 NO PORTION OF THIS DRAWING MAY BE REPRODUCED WITHOUT THE EXPRESSED WRITTEN CONSENT OF SEC, INC.
 COPYRIGHT © SEC, INC., 2021

REVIEW SET
 (Not intended for construction)

Aden Woods Section 3
 Fairview, Tennessee

Grading And Drainage & Final EPSC/SWPP Plan

REVISED: 08-06-2021; Start Comments #1
 08-31-2021; Start Comments #2
 09-28-2021; Start Comments #3

DRAWN: CFB3, SJA
 DATE: 5-7-2021
 CHECKED: MAT
 FILE NAME: 2005BAdenWoods3
 SCALE: 1"=50'
 JOB NO. 20058
 SHEET:

C3.3